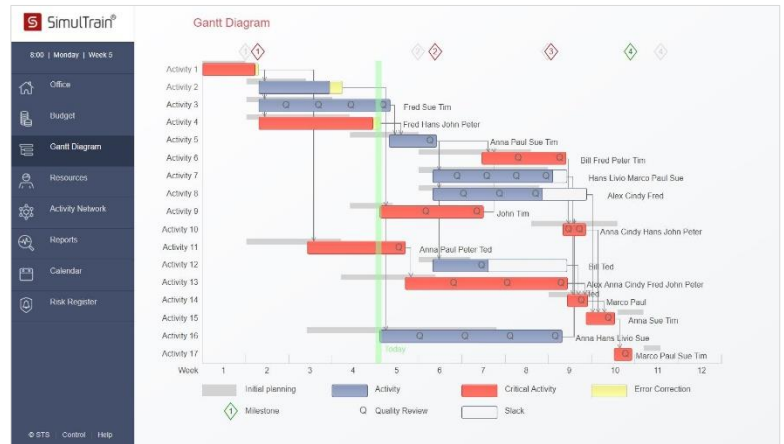


NEW FEATURES OF SIMULTRAIN 12

Layout

- HTML-based, No Flash
- Scalable to different screen sizes
- Left menu: white – red layout
- Gantt Chart: links between activities
- Organization chart includes 32 people
- Priorities can easily change / deleted
- No TO-DO list , no Resource Leveling Exercise



Simulation Control

- One-page layout
- Risk Management Difficulty changes the probability of the risk occurrence.

Status Report

- Available in the Reports from the beginning.
- Trainer asks participants to make forecast for week 4, 8, and the end of the project. The forecast must be made at least 3 weeks before the deadline.
- The report can be updated anytime and available for the trainer via the Trainer Desk.

Performance indexes	Forecast Week 4	Actual Week 4	Forecast Week 8	Actual Week 8	Forecast at Completion	Actual at Completion
Costs, %	92	98	99	99	105	102
Schedule, %	95	99	99	99	100	100
Quality, %	98	99	99	99	100	100
over budget	10'000	4'000	-	-	-	-
Delay, days	3	1	-	-	-	-

Issues

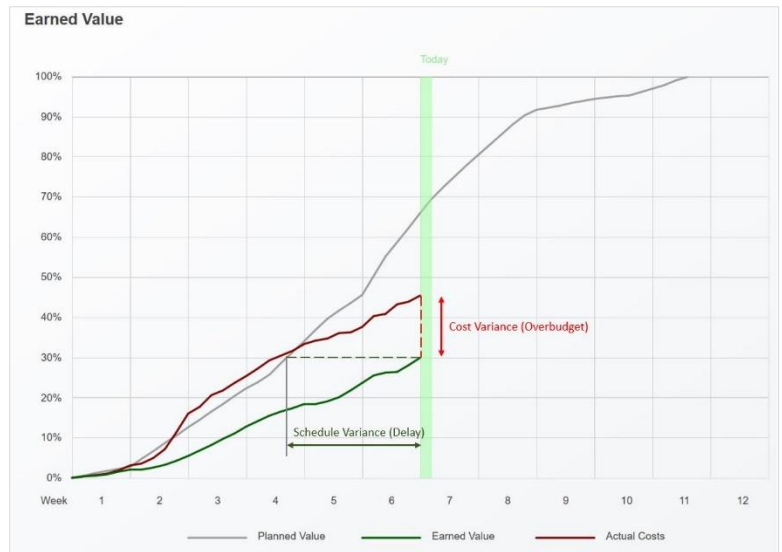
1. Not enough time for planning
2. Not enough initial information from top management
3. Too much overtime at the beginning
4. Too many people at the same activity - a mess

Actions

1. Concentrate on essential
2. Two individual discussion per week
3. One lunch / pizza party per 2 weeks
4. Avoid overtime

Earned Value

- Shows Earned Value, Planned Value, and Actual Costs.
- The chart changes if there are changes in the project plan.
- Planned Value beyond the duration of project increases proportionally to the date.

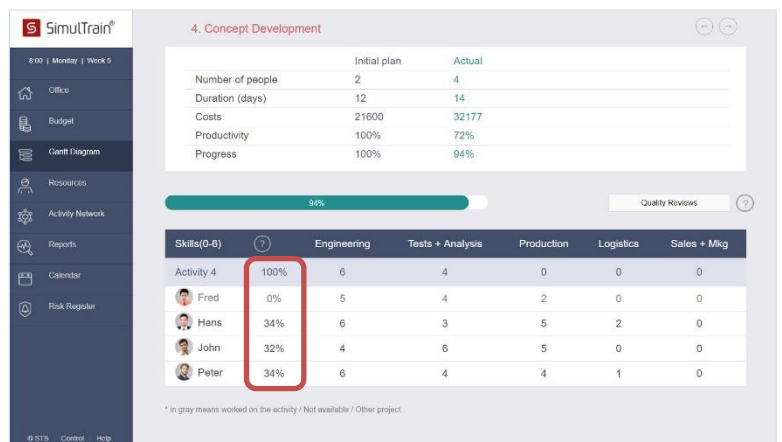


Resource Use Information

- Resource Leveling Chart shows a histogram of people in the core team, people available and the number of working-now (green) people.
- It is optional and available at the bottom of the Resource chart.

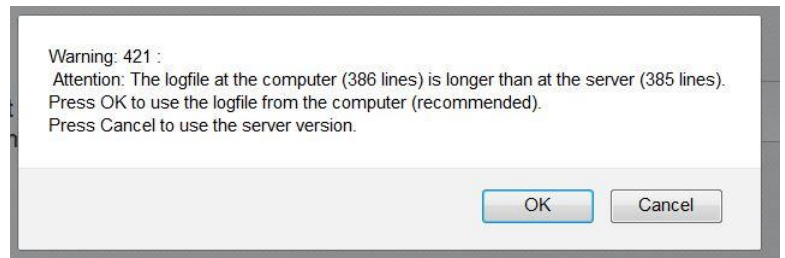


- Information on resource engagement for an activity is shown on the task page.

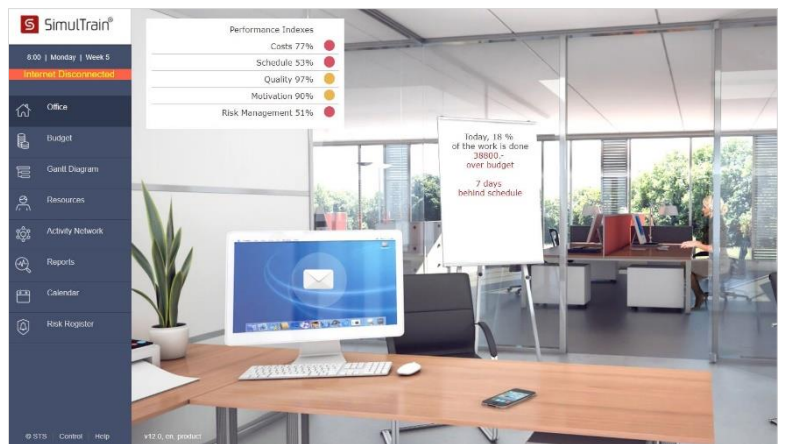


Reliability Increased

- Calculations are more precise
 - Updates every simulation hour
- Log is saved on computer and server



- Temporary Internet cuts don't affect the simulation: the participants is informed via a red alert "Internet Disconnected".



Trainer Desk

- HTML-based, No Flash.
- Team identification by passwords.
- All current functions are present.
- Status Report access anytime.
- Learning Points access at the end of the project.
- Access to each simulation in passive mode: www.simultrain.swiss/smt12/?active=false
- Please ask for a new free login.

Trainer Desk Refresh STS Feb17 Test Actions

Show 10 entries Search:

Password	Team	Last Input Time	Sim Hour	CPI	SPI	QPI	Motiv	RMI	Score	Reports
11459620	Team 1	2017-03-08 09:10:15	500	70	56	97	76	100	80	[Icons]
72175980	Team 2	2017-02-13 16:30:50	720	87	87	100	82	100	91	[Icons]
12345600	Team 3	2017-03-08 09:10:25	64	111	76	94	96	104	96	[Icons]

Showing 1 to 3 of 3 entries (filtered from 23 total entries) Previous 1 Next

Internet Browsers

- Chrome version 53+
- Firefox version 49+
- Internet Explorer version 11+
- Microsoft Edge version 25+
- Safari version 10+
- Login at www.simultrain.swiss

