

SIMULTRAIN 12 TRAINER DESK

. The software TrainerDesk

(<http://www.simultrain.swiss/smt12/admin>) is a tool for SimulTrain-Online trainers to smoothly manage the session. SimulTrain12 trainers can receive a free access to the software at office@sts.ch

Features

- The same tool for SimulTrain® and SimulTrain®+ : you just need to change the View (click on your name).
- The trainer **initializes** the same settings for all simulations.
- The trainer **starts/pauses** clocks on student's computers from his computer.
- The trainer **monitors** simulation progress of all groups in real time.
- The trainer **presents** the results of all groups to trainees.
- The trainer can **send mails** to students, even during planning phases.

Session for several simulations

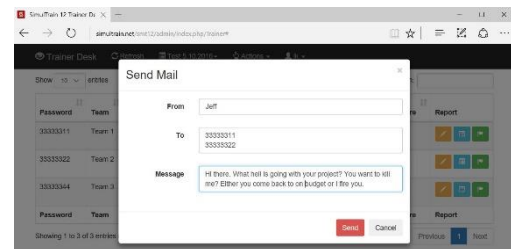
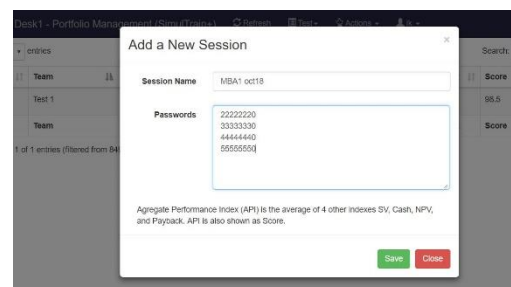
- The trainer creates a session by submitting the passwords of the participating groups.
- The trainer sets how the integral score will be calculated by providing the values of the weighting factors Cost, Schedule, Quality, Motivation, and Risk. The default value is 0.25.

Simulation initializing

- The trainer can initialize the same settings (language, number of periods, and speed) for all groups. This avoids mistakes when setting these parameters for every group separately. When students use their passwords, they find themselves directly on the "Office" page.

Progress monitoring

- The trainer can check "the time since last input". An increase in time for one of the groups means it has lost its Internet connection or stopped working.
- The trainer can use the report with the final results to show the teams' progress and define the best performer.
- The trainer can log in a simulation in passive mode.



Team	Last Input Time	Bin Month	API	SV	Cash	NPV	Payback	Score	Reports
1. Ann, Jane, Ken, Liz	2016-02-14 08:42:01	25	107	124	110	110	78	107	📄 📊 📉 📈
2. Mary, John, Tim, Ed	2016-02-14 06:25:42	25	111	125	105	112	83	113.25	📄 📊 📉 📈
3. Viv, Jim, Bill, Clara	2016-02-14 01:51:57	25	122	121	108	109	100	121.6	📄 📊 📉 📈
4. Joe, Pi, Sam, Mary	2016-02-15 06:55:52	25	72	111	37	80	50	72	📄 📊 📉 📈